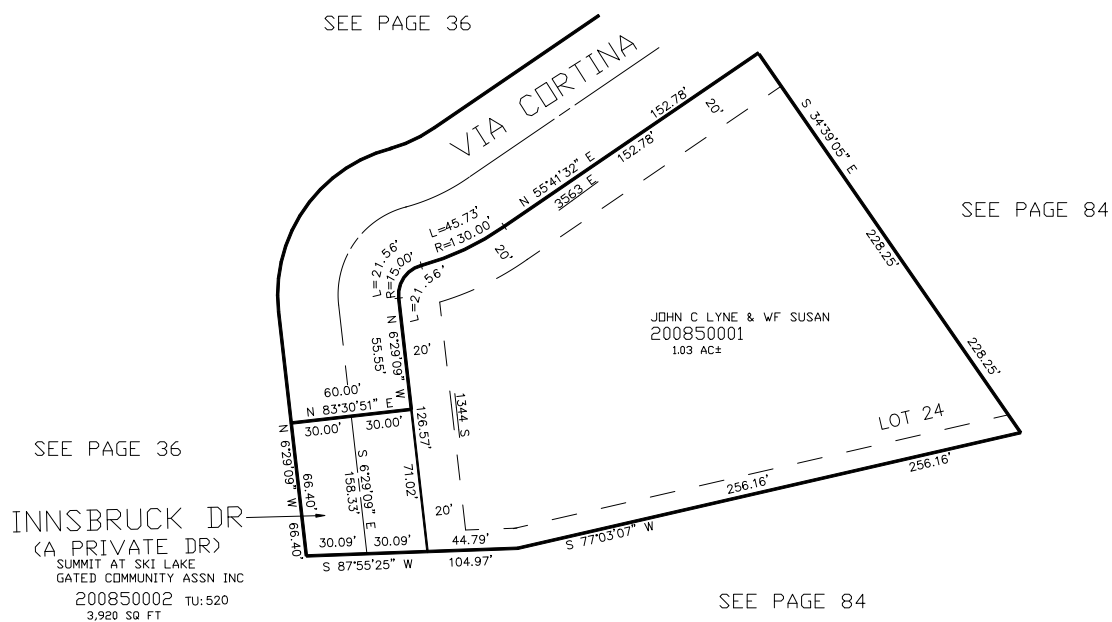


THE SUMMIT AT SKI LAKE NO. 6

IN WEBER COUNTY

TAXING UNIT: 58,520

SCALE 1" = 50'



FOR COMPLETE ENG DATA SEE
ORIGINAL DEDICATION PLAT IN
BOOK 58, PAGE 40 OF RECORDS.

10' UTILITY & DRAINAGE EASEMENTS EACH
SIDE OF PROPERTY LINES AS INDICATED
BY DASHED LINES EXCEPT AS OTHERWISE
SHOWN.